



interested in this floorplan?
give us a call!

 **307.800.7223**



unique features:

- Large windows in Dining/Living Rooms
- Expansive walk-in closet and private Toilet Room in Owner's Suite
- Mudroom, Laundry and storage/coat closet is off the garage.
- Covered front porch
- Single-level convenience

3



2



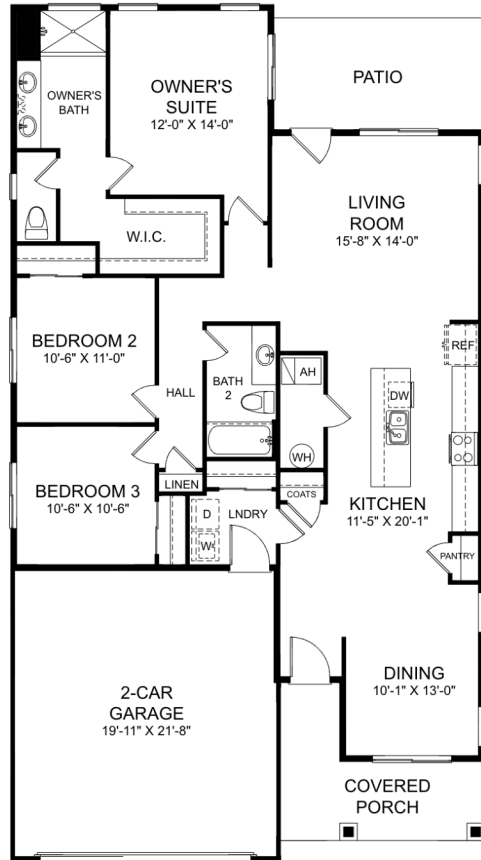
2



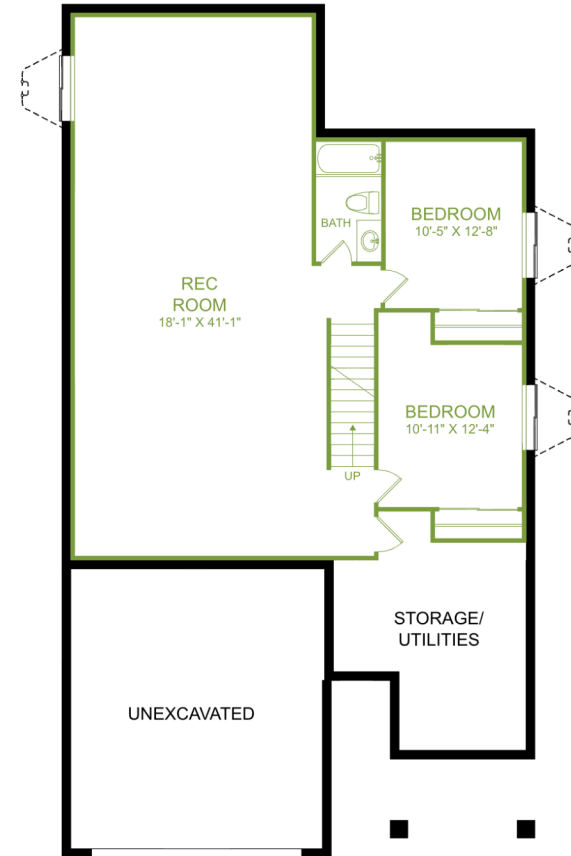
1,598 SQFT

the park

main floor



optional basement



discover more options with our interactive floorplans

customize this floorplan



3



2



2



1,598 SQFT

the park